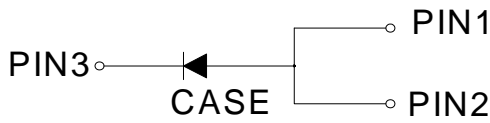


## Schottky Rectifier



### Features

- Ideal for automated placement
- Low power losses
- High forward surge capability
- Meets MSL level1, per J-STD-020, LF maximum peak of 260 °C

### Typical Applications

For use in lighting, fast switching rectification of power suppliers, inverters, converters, and freewheeling diodes for consumer, automotive, and telecommunication.

### Mechanical Data

**Package:** TO-277

Molding compound meets UL 94 V-0 flammability rating, RoHS-compliant, Halogen free

**Terminals:** T A ity, x

	6 < 0 % 2 /	8 1 , 7	6 6 8 3
Device marking code			SS5U200P
Repetitive Peak Reverse Voltage	$V_{RRM}$	V	200
Average Rectified Output Current @60Hz -sine wave, R- load, $T_c=114$	$I_O$	A	5
Forward Surge Current (Non-repetitive) @ 60Hz Half-sine wave, 1 cycle, $T_a=25$	$I_{FSM}$	A	240
Current Squared Time @1ms t 8.3ms $T_j=25$	$I^2t$	A <sup>2</sup> s	239
Storage Temperature	$T_{stg}$		-55 ~+150
Junction Temperature	$T_j$		-55 ~+150

### Electrical Characteristics $T_a=25$ Unless otherwise specified

Reverse Breakdown Voltage	$V_{BR}$	V	$I_R=0.1mA$	200	-	-
Leakage Current	$I_R$	uA	$V_R=200V T_j=25$	-	-	50
			$V_R=200V T_j=125$	-	-	500

Note1:Pulse test:300uS pulse width,1% duty cycle

Note2:Pulse test:pulse width 40mS



# SS5U200P

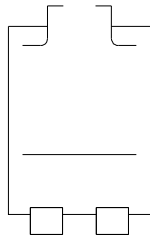
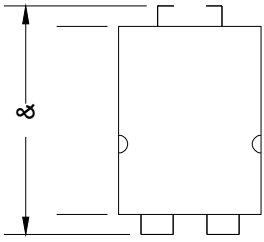
## Thermal Characteristics $T_a=25$ Unless otherwise specified

PARAMETER		SYMBOL	UNIT	SS5U200P
Thermal Resistance	Junction to Case	$R_{J-C}$	/W	8

## Ordering Information (Example)

PREFERED P/N	PACKAGE CODE	UNIT WEIGHT(g)	MINIMUM PACKAGE(pcs)	INNER BOX QUANTITY(pcs)	OUTER CARTON MS
--------------	--------------	----------------	----------------------	-------------------------	-----------------

v2XWOLQH 'LPHQVLRQV





## Disclaimer

The information presented in this document is for reference only. Yangzhou Yangjie Electronic Technology Co., Ltd. reserves the right to make changes without notice for the specification of the products displayed herein to improve reliability, function or design or otherwise.

The product listed herein is designed to be used with ordinary electronic equipment or devices, and not designed to be used with equipment or devices which require high level of reliability and the malfunction of which would directly endanger human life (such as medical instruments, transportation equipment, aerospace machinery, nuclear-reactor controllers, fuel controllers and other safety devices), Yangjie or anyone on its behalf, assumes no responsibility or liability for any damages resulting from such improper use.