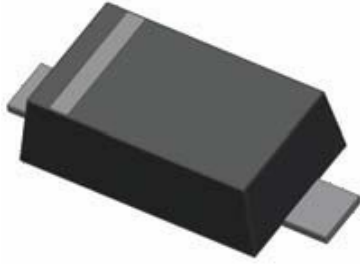
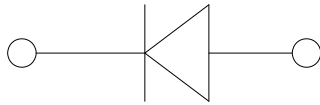




# Small Signal Schottky Barrier Diode



SOD523



### Features

- Epoxy meets UL-4 V-0 flame rating and halogen free
- Moisture Sensitivity Level 1
- $V_{RM}$  40V
- $I_{FAV}$  200mA
- Part number with suffix means AEC-Q101 qualified

### Applications

- Low Forward Voltage Drop
- Switching

### Mechanical Data

- Case: SOD523
- Terminals: Tin plated leads - solderable per >-STD-002 and >ESD22-B102
- Polarity: Cathode line denotes the cathode end

### Maximum Ratings (Ta 125 °C)

PARAMETER	SYMBOL	UNIT	CONDITIONS	VALUE
Maximum Repetitive Peak Reverse Voltage	$V_{RRM}$	V		40
DC Blocking Voltage	$V_R$	V		40
Average Forward Current	$I_{FAV}$	mA		200
Peak Forward Surge Current	$I_{FSM}$	A	, 3ms - half sine	1
Power Dissipation	$P_{tot}$	mW		150
Thermal Resistance - junction to Ambient	$\theta_{JA}$	K/W		**+
Junction Temperature	$T_J$			-55 to 125
Storage Temperature Range	$T_{stg}$			WR



## RB521S-40Q

vElectrical Characteristics Ä 7D

8QOHVV RWKHUÄLVH VSHFLILHG

PARAMETER	SYMBOL	UNIT	CONDITIONS	MIN	MAX
-----------	--------	------	------------	-----	-----



Characteristics (Typical)

Fig.1:  $P_D$ - $T_A$

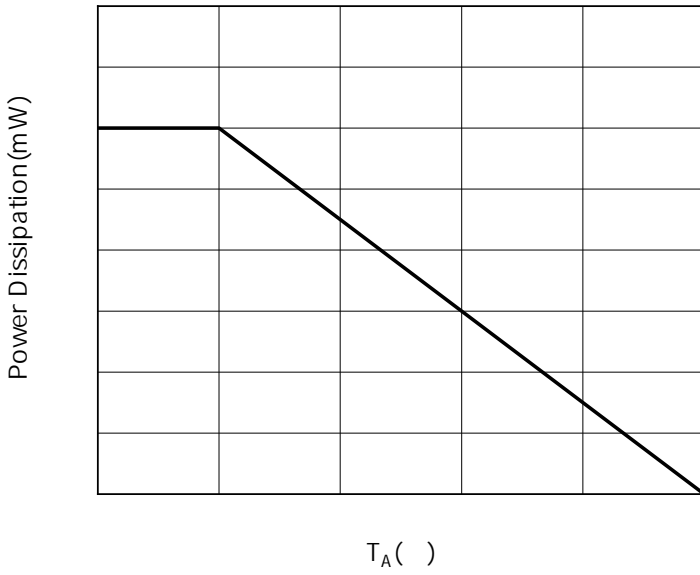


Fig.2: Capacitance Characteristics

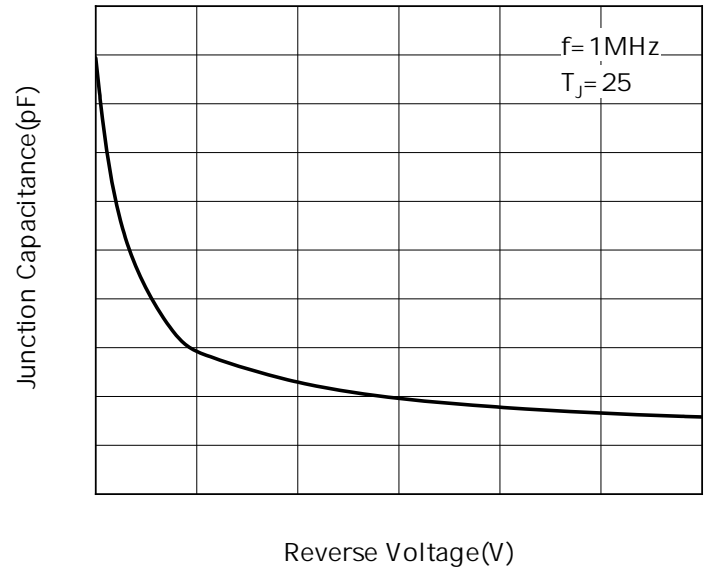


Fig.3: Forward Characteristics

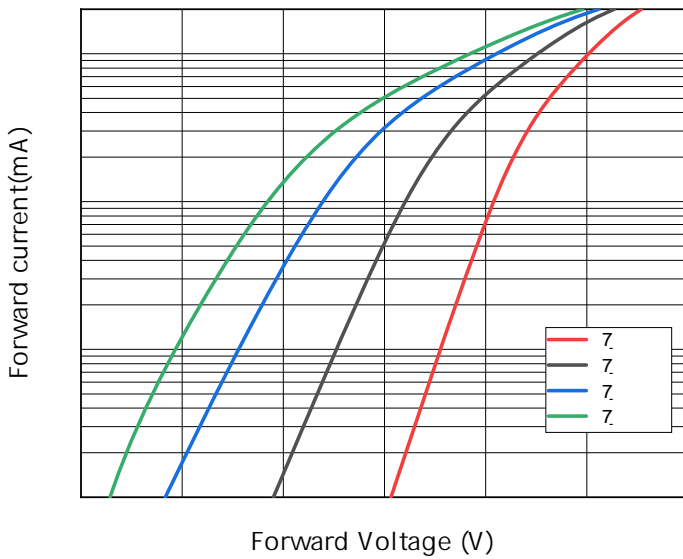
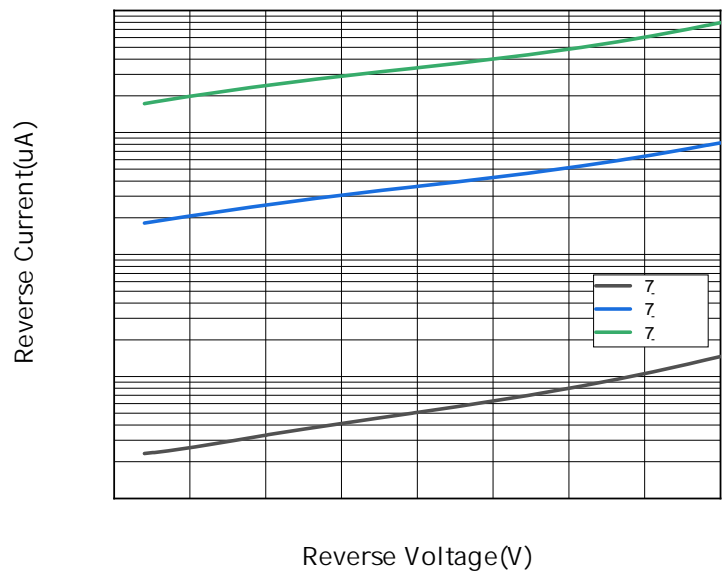


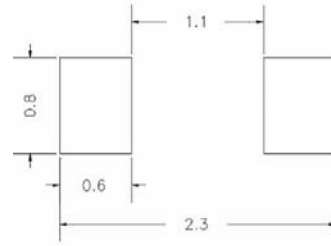
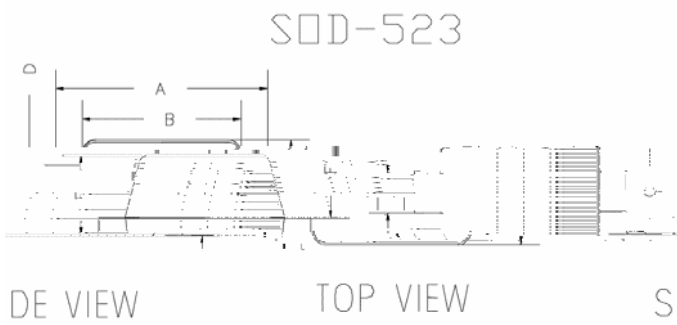
Fig.4: Reverse Characteristics





# RB521S-40Q

## vOutline Dimensions

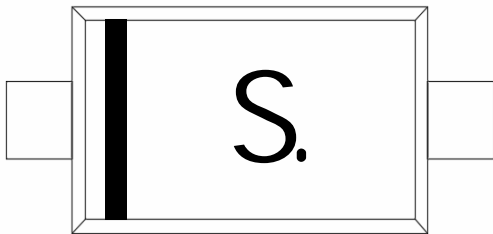


UNIT: mm

SUGGESTED SOLDER PAD LAYOUT

DIMENSIONS				
DIM	INCHES		MM	
	MIN	MAX	MIN	MAX
A	0.059	0.067	1.500	1.700
B	0.043	0.051	1.100	1.300
C	0.900	0.928	0.035	0.070
D	0.850	0.910	0.014	0.250
E	0.200	0.202	0.008	0.050
F	0.020	0.028	0.001	0.001

## Marking Information



**Note:**

1" All marking is at middle of the product body  
 \$OO PDUNLQJ LV LQ ODVHU PDUNLQJ  
 %RG\ FRORU %ODFN

( # D



# RB521S-40Q

## Disclaimer

The information presented in this document is for reference only. Yangn Hou Yang ^ ie Electronic Technology Co " ě Ltd reserves the right to make changes without notice for the specification of the products displayed herein to improve the reliability or other uses.

The product listed herein is designed to be used with automatic electronic equipment. The product is not intended for use in applications where failure could result in personal injury, death, or property damage. The user should refer to the user manual for the product for more information.

7KLVSXEOLFDWLRGHSVXSSHHWIDGIDVLQURQAPDXVLSRQLSGHYLRXDXGLWLRQDO LQWRHUPDWLRKWWZ \DQJMLHRFRFRQVXOW \RXU QHDUHVW <DQJMLVHMIDQVFIHV RILFH IRU IXUW

D# D